



What's new & what's next

Anneliese Arno
Community Manager

5-6 October 2020



Welcome!

Webinar Presenter:

Anneliese Arno
Community Manager (Australia-based)

- For video tutorials and helpful articles, visit our Knowledge Base at support.covidence.org
- For online support any time, email support@covidence.org

Agenda

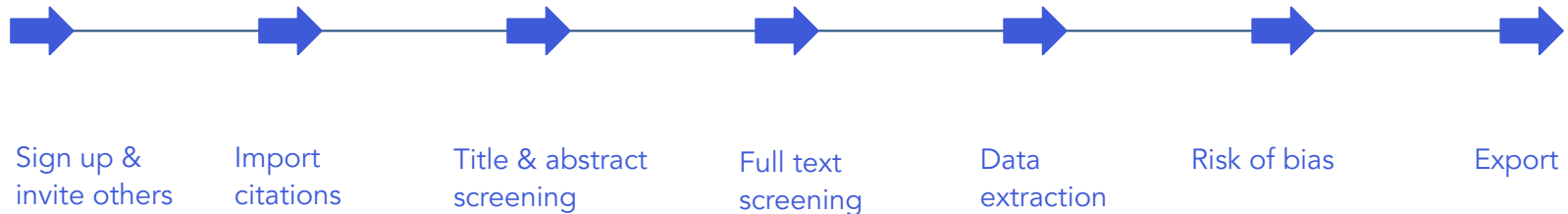
- What is Covidence?
- New feature: Inter-rater reliability
- Extraction 1.0
 - How it interacts with RevMan
 - Common challenges and how to avoid them
- Extraction 2.0
 - Key differences
 - What's in development (RoB 2.0!)

About Covidence

- Covidence is an online platform for systematic review production
- Our vision is a world shaped by the best evidence possible
- Our mission is to create tools to make systematic reviewing faster, easier, and more enjoyable
- Part of Cochrane toolkit

About Covidence

Save (a lot) of time by streamlining your systematic review



130,000+

Users globally

200+

Universities, societies
& hospitals

110,000+

Reviews started

New Cochrane Review Ecosystem

plan

search



write

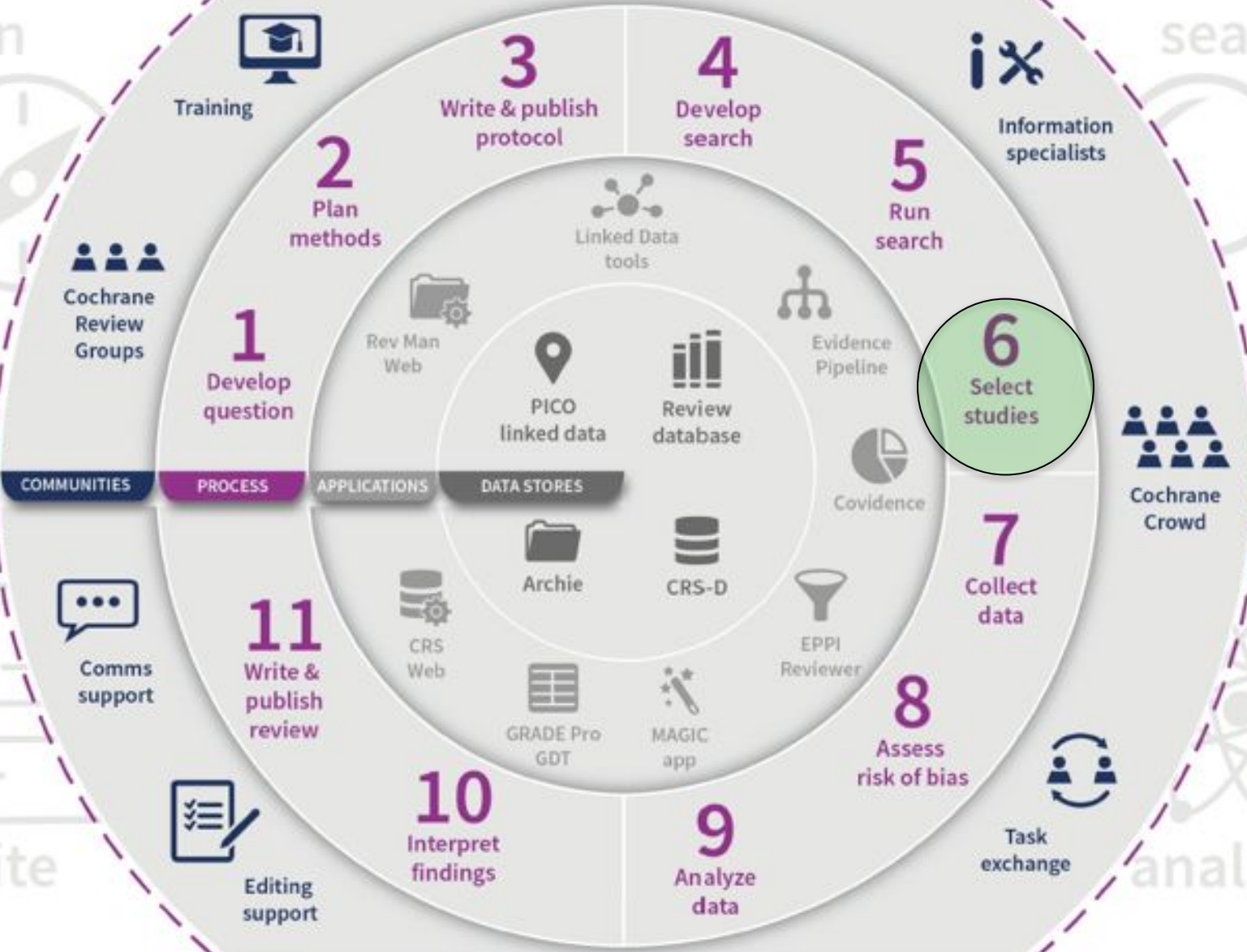
analyze



New Cochrane Review Ecosystem

plan

search



write

analyze



New Cochrane Review Ecosystem

plan

search



write

analyze



New Cochrane Review Ecosystem

plan

search



write

analyze



Inter-rater reliability

- Automatically calculated
- Exportable to CSV
- Separate for Title/abstract screening and for Full text review

Reviewer A	Reviewer B	A Yes, B Yes	A Yes, B No	A No, B Yes	A No, B No	Proportionate Agreement	Yes Probability	No Probability	Random Agreement Probability	Cohen's Kappa
Bart	Lisa	185	77	84	4596	0.96742	0.00289	0.89544	0.89832	0.67959
Homer	Bart	54	22	83	5492	0.98142	0.00326	0.84272	0.84598	0.62114

Extraction 1.0 v Extraction 2.0

1.0

- Optimised for intervention reviews
- Less initial set-up
- RevMan 5 integration

2.0

- More flexible
- More suited for qualitative data
- Template workflow

Common challenge: Templates

Intended workflow:



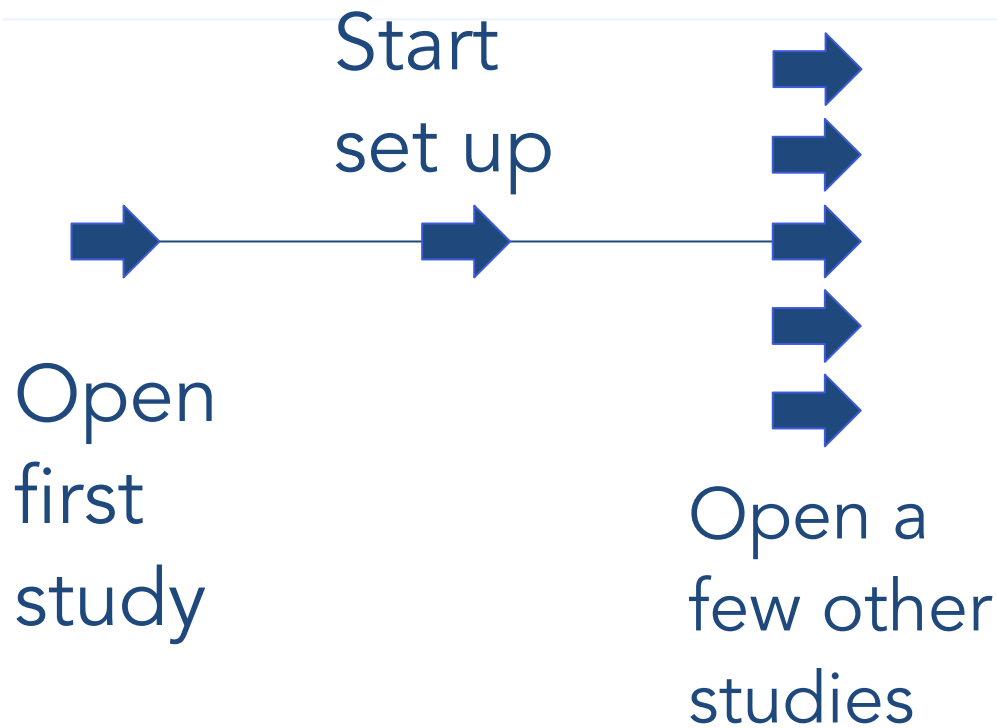
Open
first
study

Set up
extraction
template

Complete all
other
extraction
forms

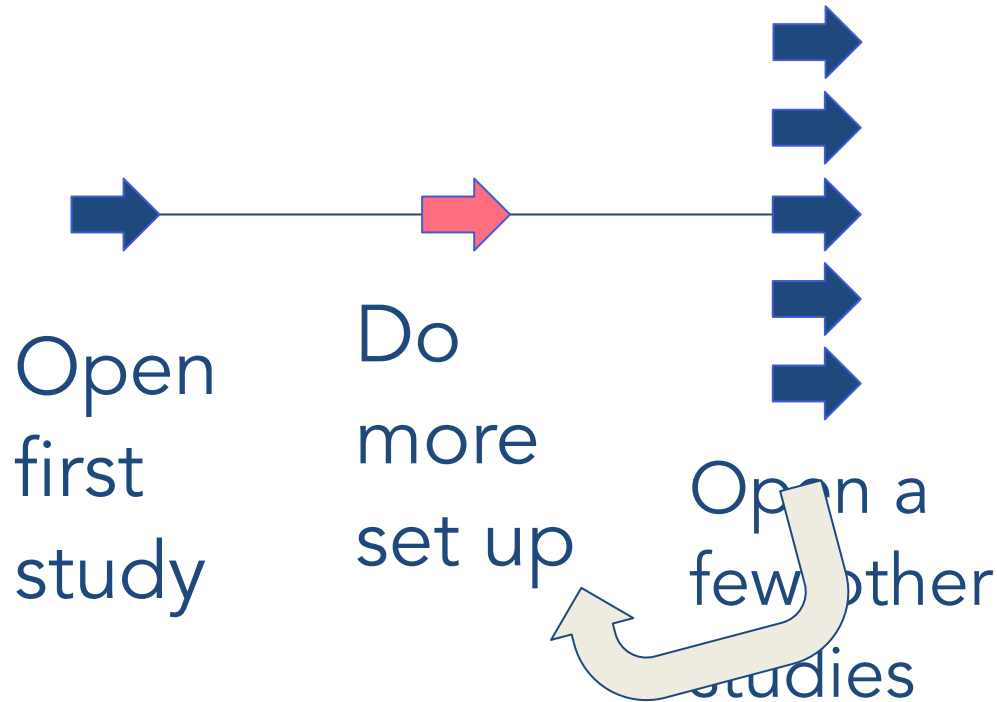
Common challenge: Templates

Real life



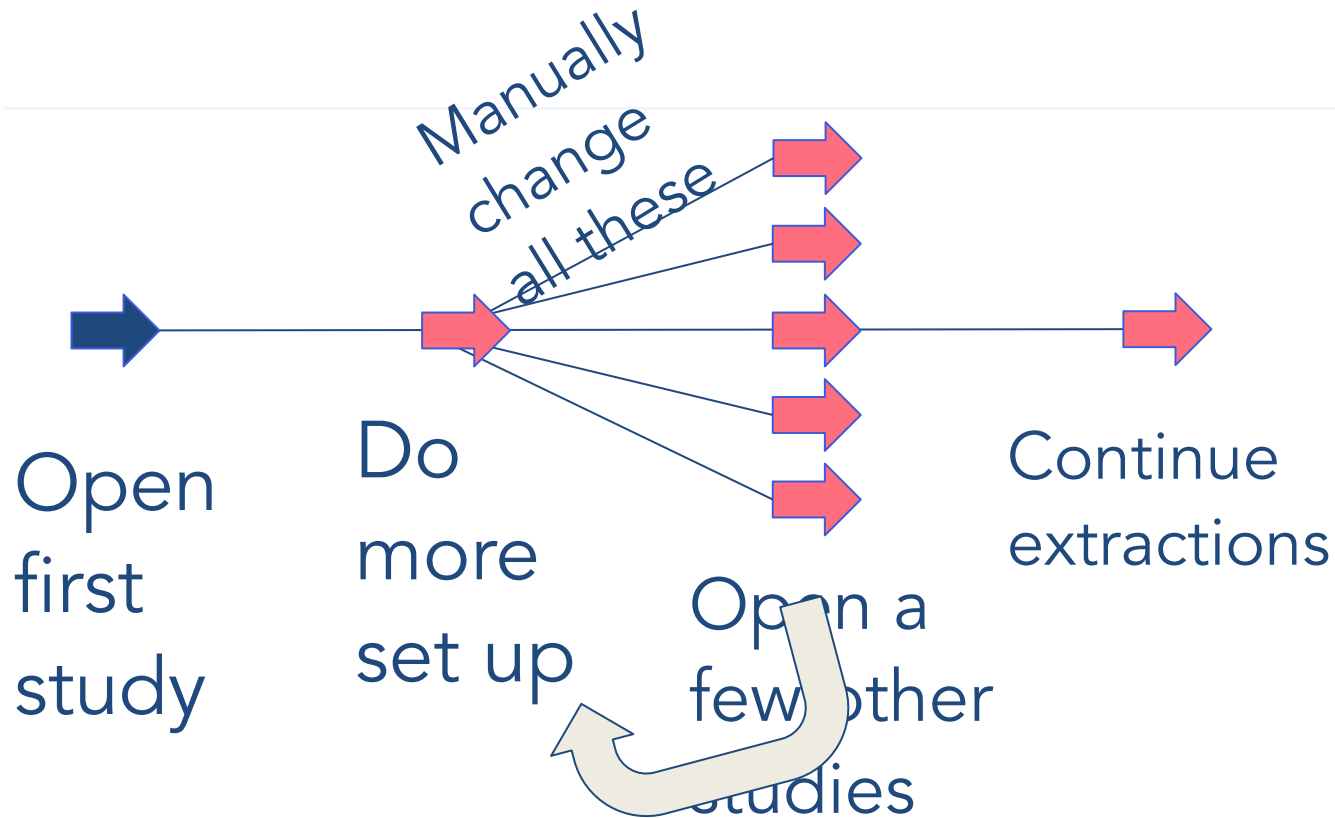
Common challenge: Templates

Real life



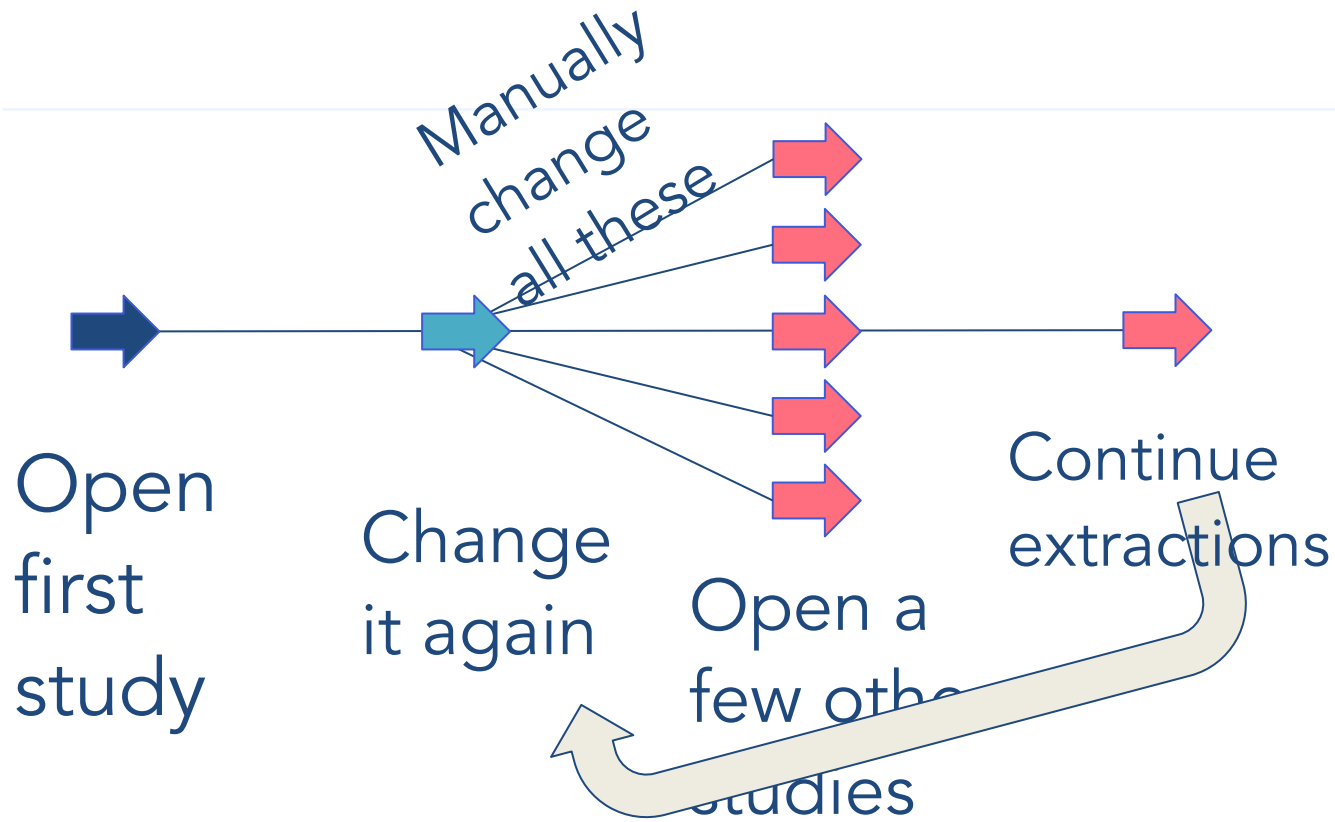
Common challenge: Templates

Real life



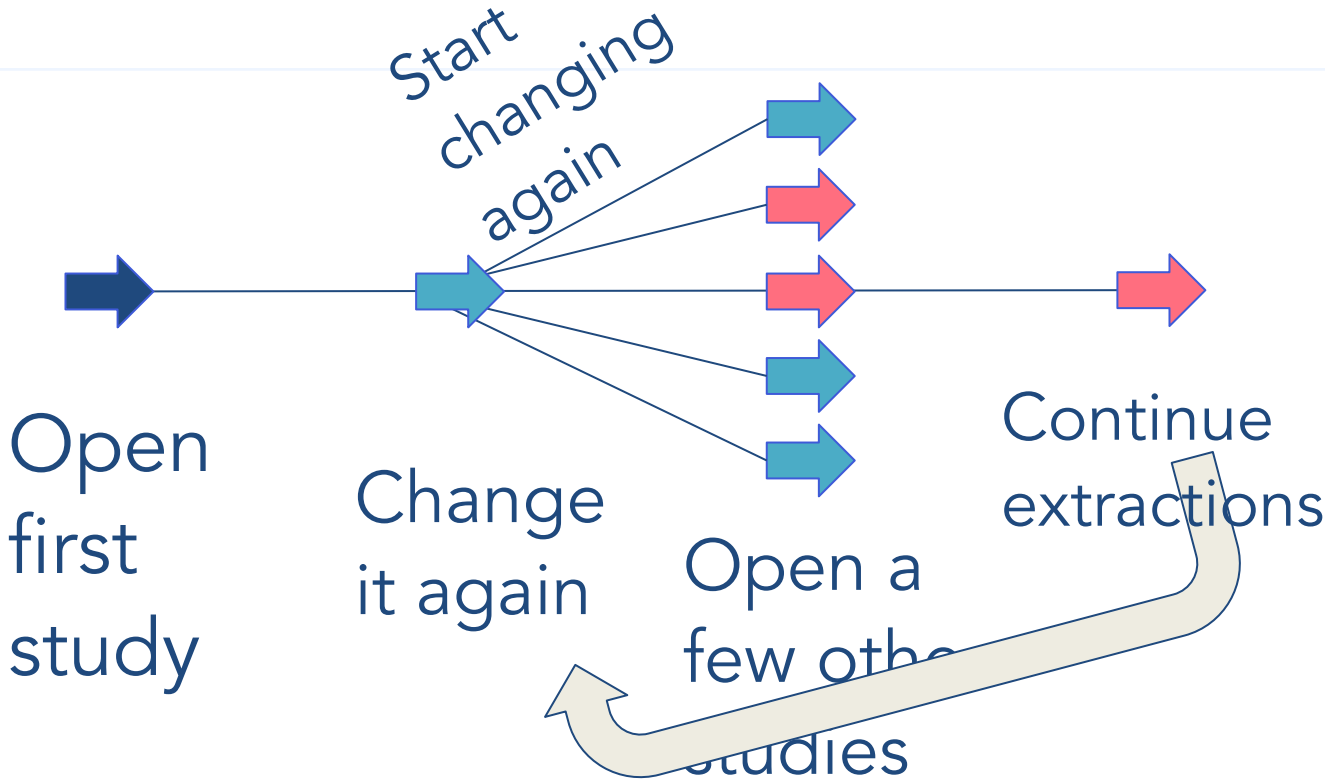
Common challenge: Templates

Real life



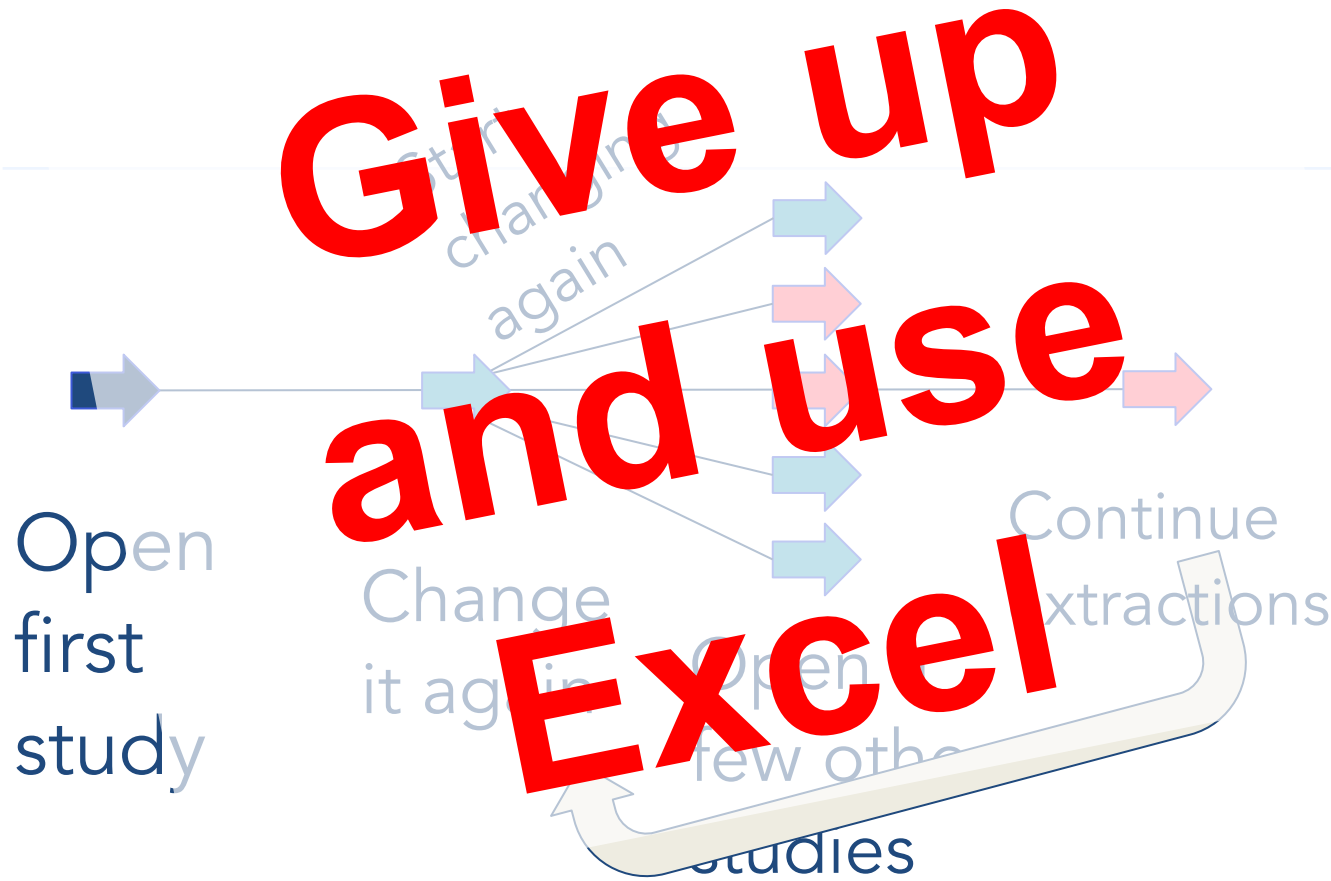
Common challenge: Templates

Real life



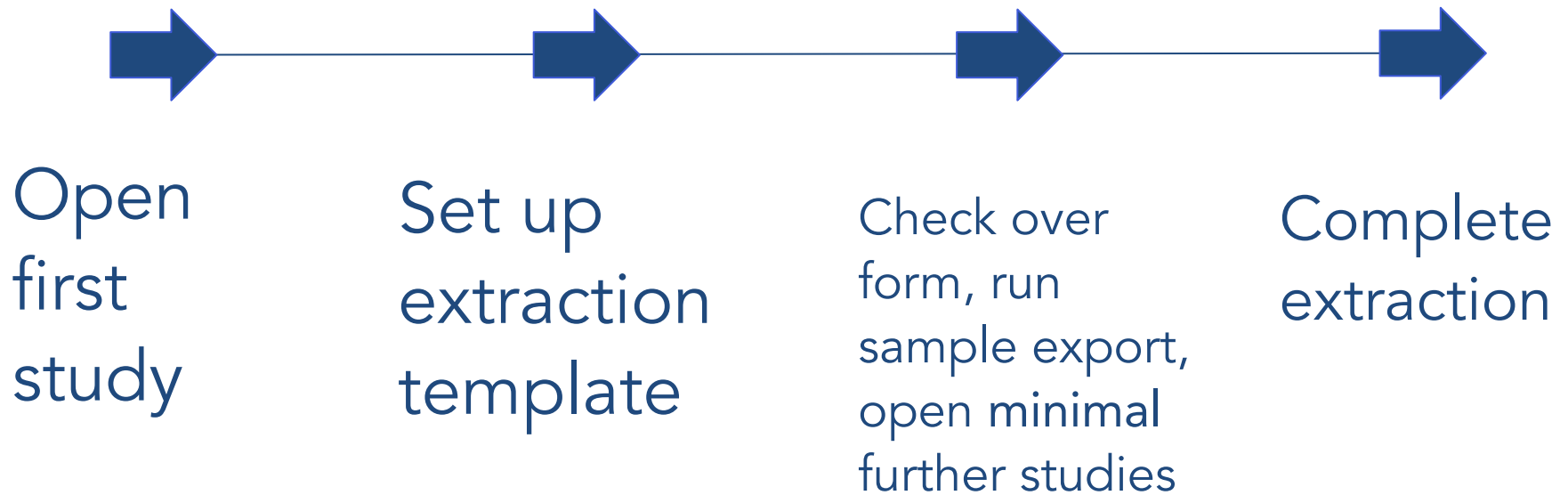
Common challenge: Templates

Real life



Common challenge: Templates

Solution: Pilot form



Let's dive in

Takeaway Extraction 1.0 tips:

- Pilot your extraction form
- Simplify your intervention (study arm) labels
- Add *all* outcomes and interventions to your *Review Template* study; delete/ignore as needed on individual studies

Takeaway Extraction 2.0 info:

- Flexible but lacks quantitative data
- Creating a template is its own step
- Not recommended (yet) for intervention reviews

In development: Risk of Bias 2.0

Data extraction Quality assessment

Specify outcomes

Specify which outcome is being assessed for risk of bias

<u>Intervention/comparator name</u>	<u>Outcome name</u>	<u>Progress</u>
Apple vs pear	Mortality	Not started
Apple vs pear	Obesity	Not started

RoB 2 assessment for Mortality

What is the aim for the results?

To assess the effect of *assignment to intervention* (the 'intent-to-treat' effect)
 To assess the effect of *adhering to intervention* (the 'pre-protocol' effect)

Domain 1: Risk of bias arising from the randomisation process ∨

Domain 2: Risk of bias due to deviations from the intended interventions (effect of assignment to intervention) ∨

Domain 3: Missing outcome data ∨

Domain 4: Risk of bias in measurement of the outcome ∨

Domain 5: Risk of bias in selection of the reported result ∨

We need your help!

- We need Cochrane authors who can help us perfect the new RoB 2 form in Covidence
- Sessions available from now through 14 October 2020
- Go to: <https://tinyurl.com/UXrob2>

Questions?

Sign in: https://app.covidence.org/sign_in

Knowledge Base: support.covidence.org

Top 5 Tips for DE: <https://tinyurl.com/y8j57x5s>

Support enquiries: support@covidence.org