

# Two sides of the camera: Collaboration, Co-creation and Co-production in public health research

Prof Lynn Hendricks (PhD),  
Stellenbosch University

Mrs Rizqah Dollie, The Dollie House

Dr Taahira Toefy, Department of Health

25 September 2024  
[lynnah@sun.ac.za](mailto:lynnah@sun.ac.za)  
X: @Research\_ambit

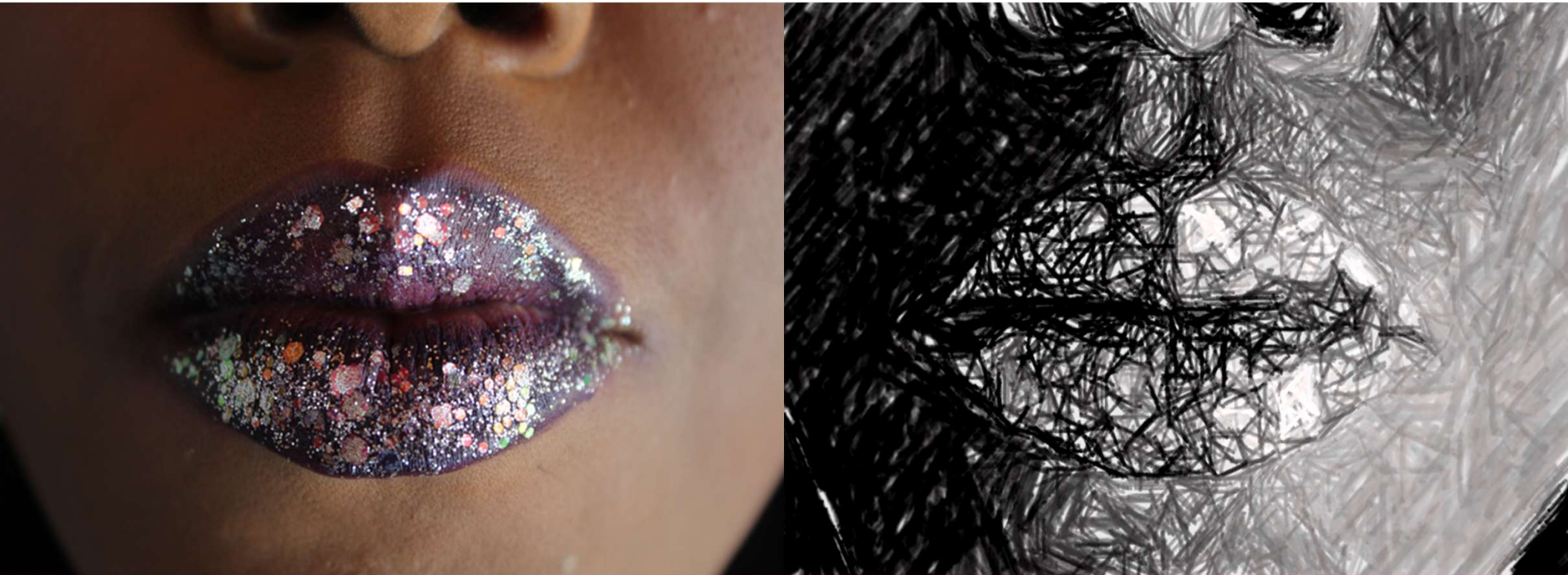


## Main topics



- The power of Collaboration, Cocreation and Co-production
- Two sides of the camera - perspectives
- 6 C's of community engagement for researchers

# The power of collaboration, cocreation and co-production



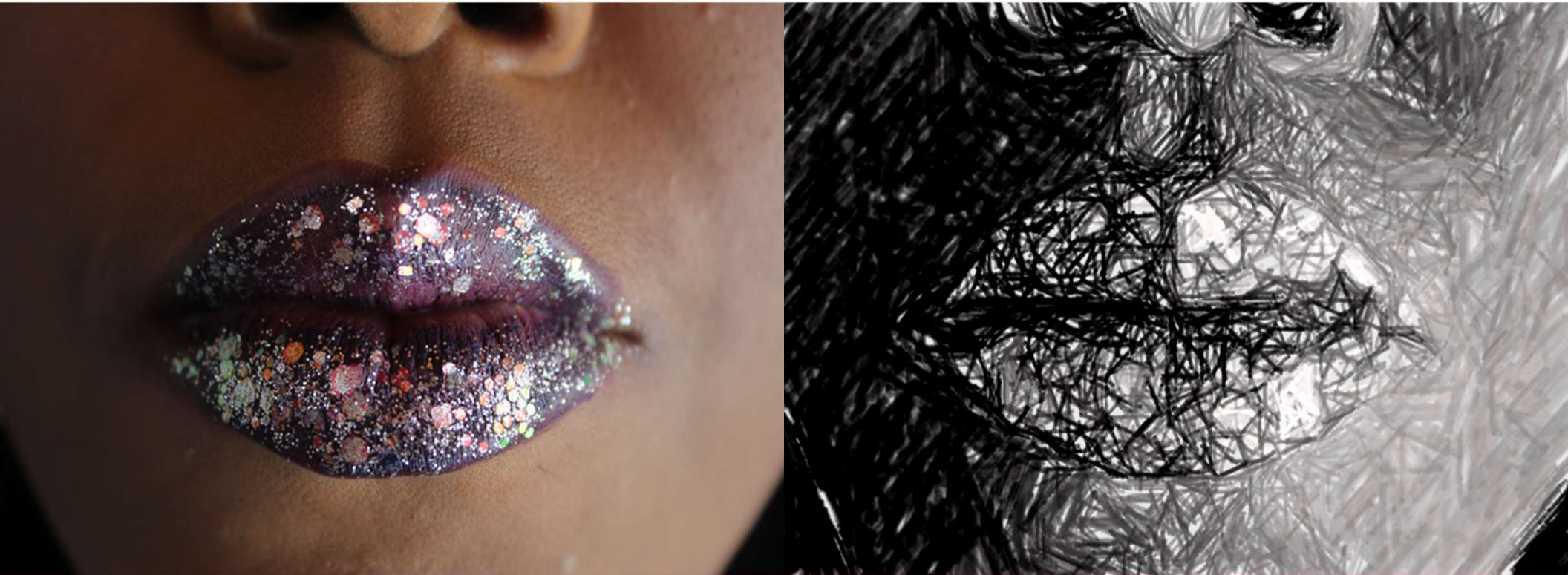
# The power of collaboration, cocreation and co-production



- Amplifying voices
- Fostering inclusivity
- Driving meaningful change
- Building trust and relationship
- Empowering womxn



# Two sides of the camera - perspectives



# Researcher Perspective



Participatory methods

# The multisensory experience of adherence

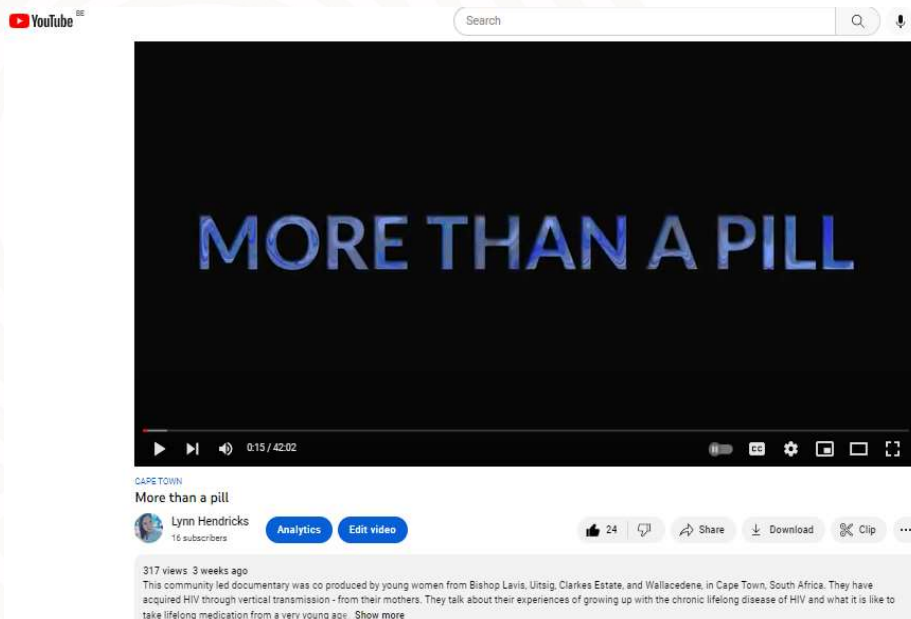




# The matter of adherence



# Documentary: More than a pill



**KU LEUVEN**

**Stellenbosch**  
UNIVERSITY  
IYUNIVESITHI  
UNIVERSITEIT

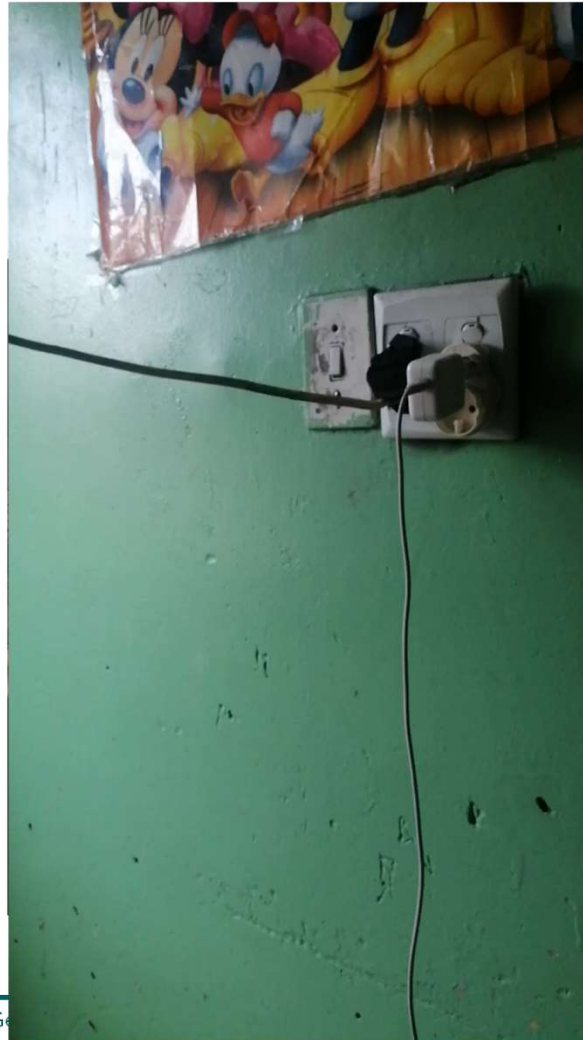
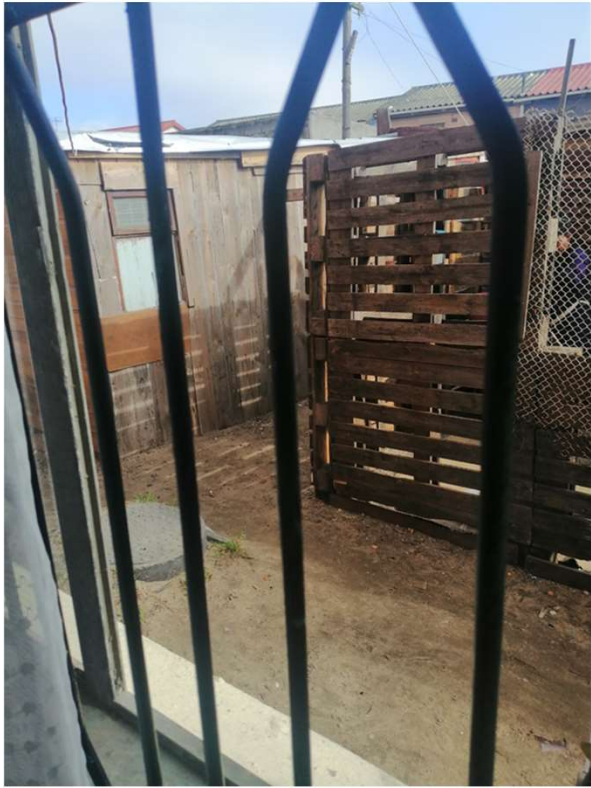
# Exhibition and community stakeholder dialogues



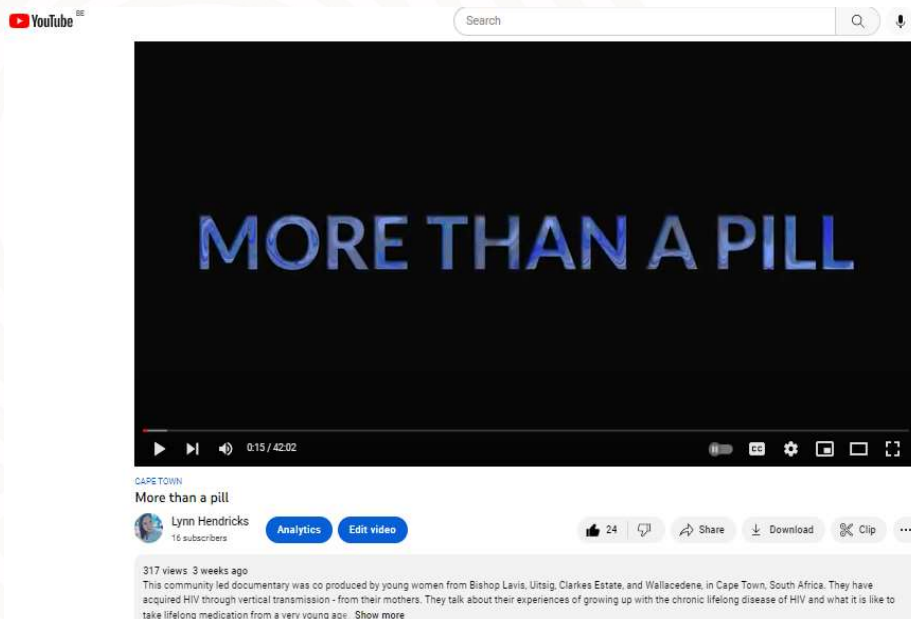
# Living with the un(exposed) secret



# Environments as friends and foes



# Documentary: More than a pill



**KU LEUVEN**

**Stellenbosch**  
UNIVERSITY  
IYUNIVESITHI  
UNIVERSITEIT

# Exhibition and community stakeholder dialogues



# How can we enable environments for young women?

75 INTERVIEWS

32 PARTICIPANTS

12 CO RESEARCHERS

MOVIE SCREENING

ART EXHIBITION

STAKEHOLDER DIALOGUE





# Visual Perspective

# Visual Perspective: The Role of the Camera



# Visual Perspective: Building Trust

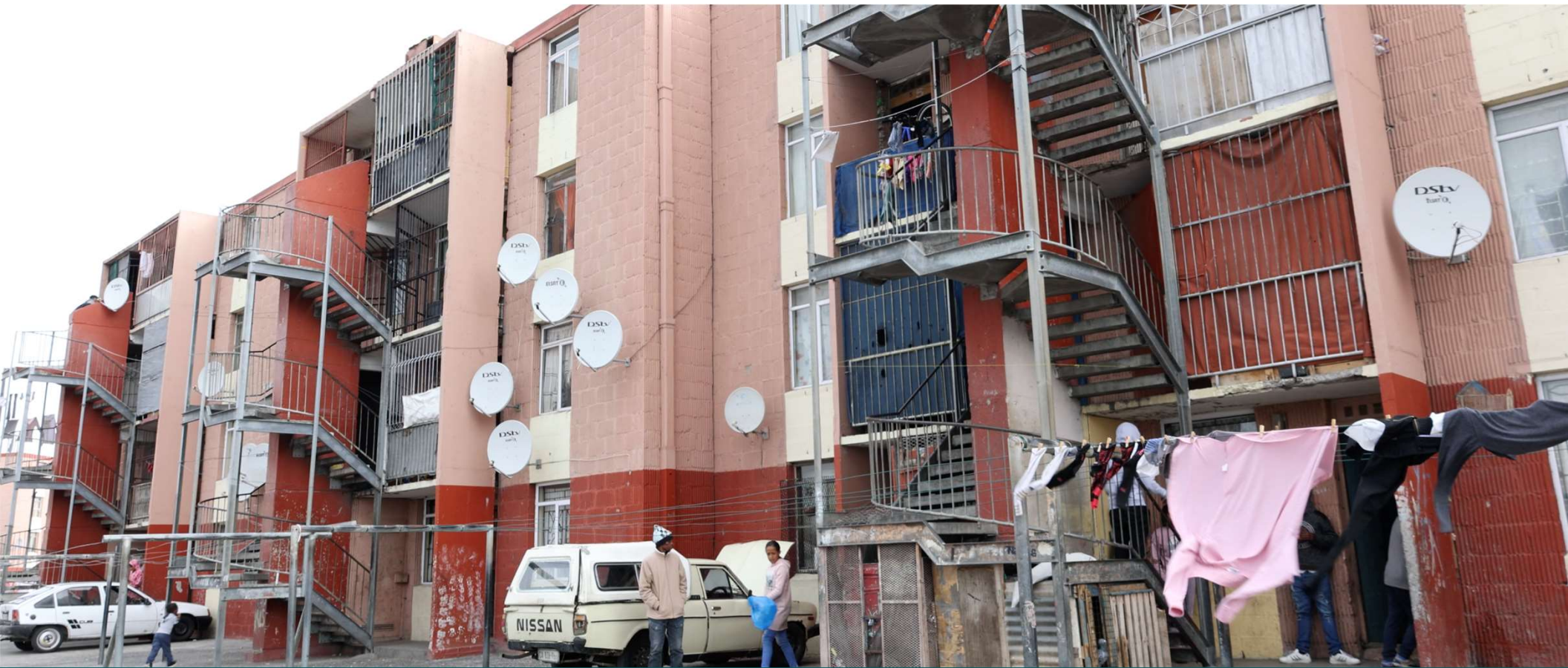
- Effective Communication
- Collaboration & Respect
- Transparency
- Meaningful Engagement



# Visual Perspective: Challenges & Risks



## Visual Perspective: How can visual methods such as camera and film advance health research?



# Medical Practitioner/Staff Perspectives



# Roles and Experience

- **Background context to community of Bishop lavis CDC**
  - Community clinic is the heartbeat- direct impact on community health and wellbeing, quality of service and care provided
  - Poverty, gang violence, GBV, Child abuse, neglect
  - Clinic footprint- early discovery = early recovery
  - Clinic set up/ environment: separate IDC catering for clients with TB & HIV
- **Medical Officer Role in ID unit**
  - 5yrs experience in unit
  - Continuation of care
  - Accountability
  - Preferential treatment

# Roles and Experience

- Approval process - Linkage to IDC staff
- Relevance of Topic - Ideal clinic requirement Adolescent/ Youth friendly service
- Lynn and team's frequency of visits- familiar with clinic system, better acquainted with the IDC team
- Patient recruitment for study
- Busy clinic- limited staff support wrt Clinicians, more reliable members admin support
- Assistance to Clinic team with adolescent folder audit



# Initial Concerns

- Interruption of clinical service
- Delay in patient flow
- Prolonging clinic waiting times
- Confidentiality
- Reliability of participants



# Change in perspective

---

Familiarity of the youth patients with clinic staff improved

---

Positive feedback from Girls and Parents

---

Personal growth of the girls- change in understanding of health

---

Ease of counselling

---

Improved compliance

---

Visible Improvement in mental health and patient relationships with their parents

---

Positive feedback = positive attitude toward the project

---

Visible value of the research

---

Improved staff commitment and collaboration

---

# Risk vs Benefit of project

- Risks for young women
  - Public disclosure
  - Stigma - family , school
  - Family dynamics- improvement vs breakdown

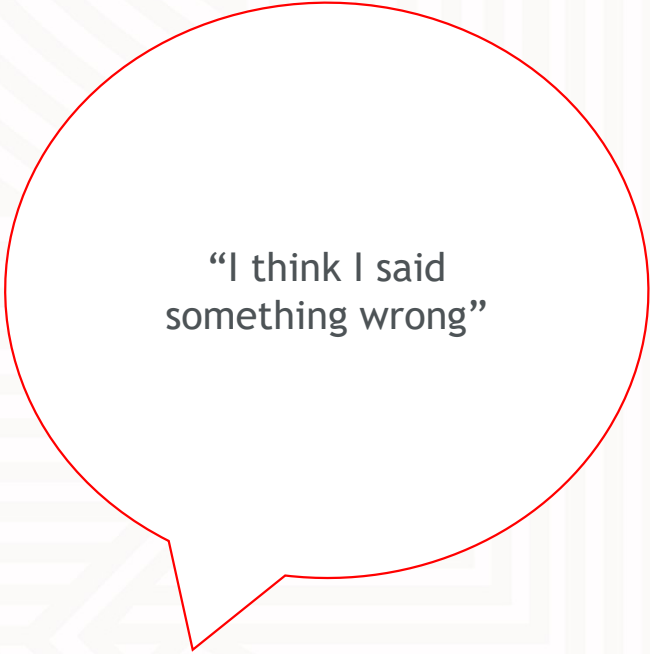


# Risk vs Benefit of project

- **Benefits for young women**
  - Personal growth
  - Relationships
  - New Friendships, bonding
  - Improved Clinic adherence- group support
  - Solidified clinic footprint
- **Clinic Benefit**
  - Win-win-win:
    - Research completion- Patient personal growth- Clinic Ideal Clinic requirement establishment of youth groups



# Corridor talk



“I think I said  
something wrong”

# Lights, Camera, Action!!

- Comfortability factor
- Preparation- questions shared prior to interview, answers prepared
- Audience
- Limelight experience- Dollie House guidance
- Conversation rather than interrogation type of interviewing skills
- Presence of Lead investigator/ researcher
- Fear of dissemination of incorrect information
- Fact checking
- Editing worries
- Office setting



# Challenges and Risks

- Timing morning vs afternoon clinic setting
- Arrangement into clinic
- Community dangers
- Patient recruitment
- Patient reliability
- Staff reliability- operational requirements
- Hierarchy of managers- prior arrangements, open communication
- Background noise, interruptions



# Advancement in health research

- Using Visual Video footage / Camera
- Evolution of learning- digital Time
- Advantage of Social media platforms
- Reality shows
- 3<sup>rd</sup> world literacy challenges
- Flip charts vs Short films



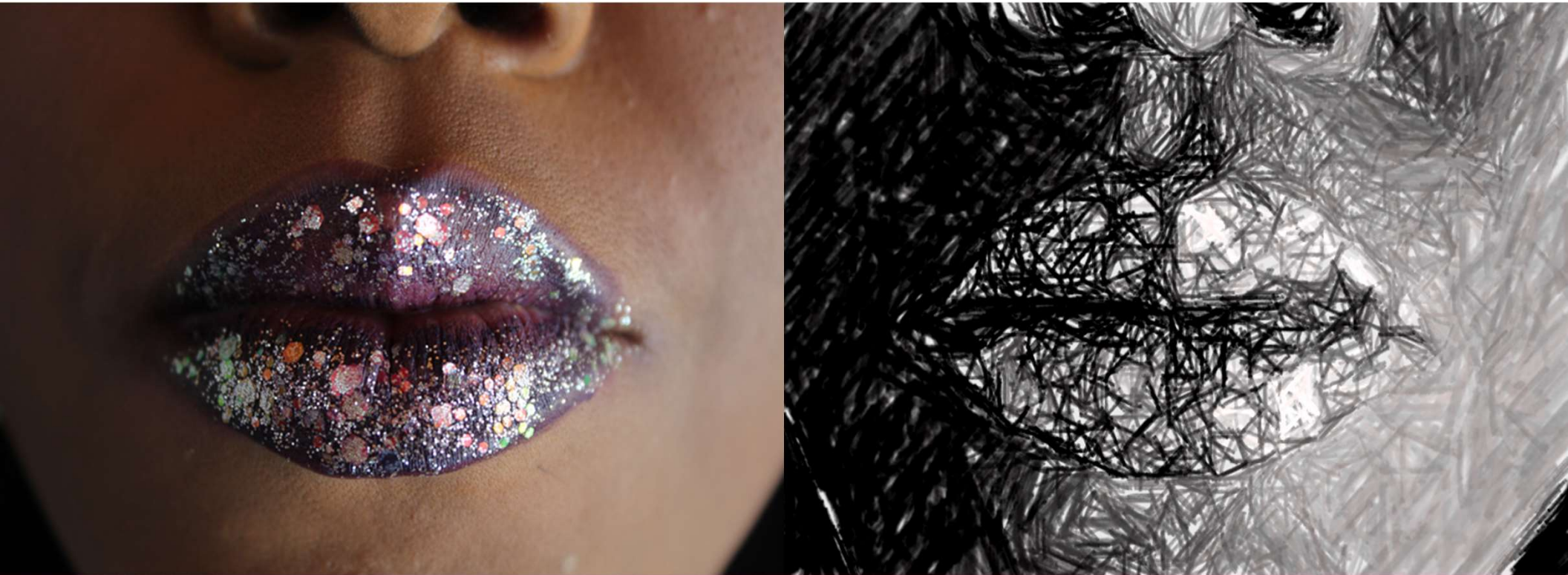


# Main Takeaways

- State sector operational Hierarchy
- Operational requirements priority 1- can interfere with timing/ schedules
- Patient recruitment- waiting times
- Incentives
- Consistency, familiarity, build rapport



# The 6 C's of community engagement for researchers



# The 6 C's of Community Engagement for Researchers

---

- Character
- Cultural Competence
- Communication
- Co-production
- Capacity-building
- Commitment



# The 6 C's of Community Engagement for Researchers

---

- Character
- Cultural Competence
- Communication
- Co-production
- Capacity-building
- Commitment



# The 6 C's of Community Engagement for Researchers

---

- Character
- Cultural Competence
- **Communication**
- Co-production
- Capacity-building
- Commitment



# The 6 C's of Community Engagement for Researchers

---

- Character
- Cultural Competence
- Communication
- Co-production
- Capacity-building
- Commitment



# The 6 C's of Community Engagement for Researchers

---

- Character
- Cultural Competence
- Communication
- Co-production
- Capacity-building
- Commitment



# The 6 C's of Community Engagement Researchers

---

- Character
- Cultural Competence
- Communication
- Co-production
- Capacity-building
- Commitment







## The 6 C's of Community Engagement for Researchers

- Character
- Cultural Competence
- Communication
- Co-production
- Capacity-building
- Commitment

# Key Message

“Empowering womxn through co-produced, collaborative, culturally sensitive research fosters impactful and sustainable solutions for health.”

*Dr Lynn Hendricks*



**WGHI** WOMEN IN  
GLOBAL HEALTH

**Elevating Womxn through Community  
Engagement and Co-production**  
Women in research and partnerships – 19 March 2024





Thank you  
Enkosi  
Dankie  
Dankje

[lynnah@sun.ac.za](mailto:lynnah@sun.ac.za)  
@Research\_ambit



Stellenbosch  
UNIVERSITY  
IYUNIVESITHI  
UNIVERSITEIT