

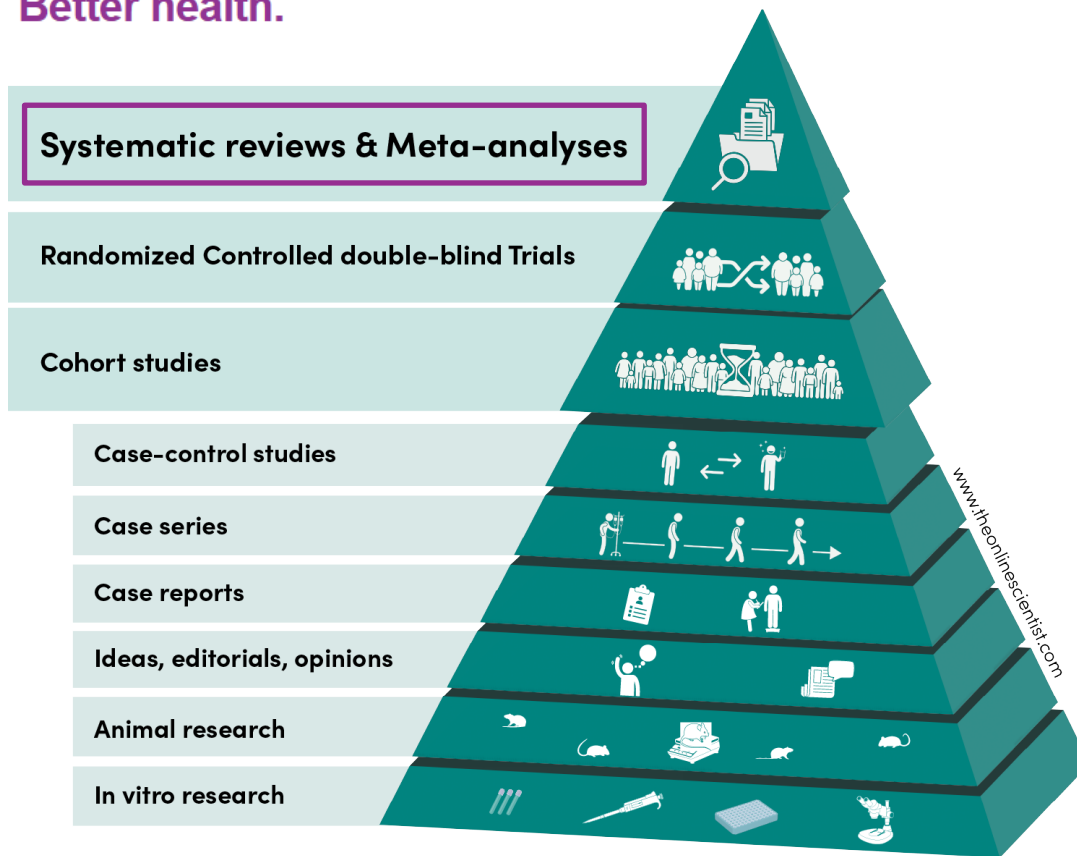
# Introduction to RevMan: a walk-through for new users

Rebecka Hall

Product Owner of RevMan, Cochrane



Trusted evidence.  
Informed decisions.  
Better health.



# Webinar outline

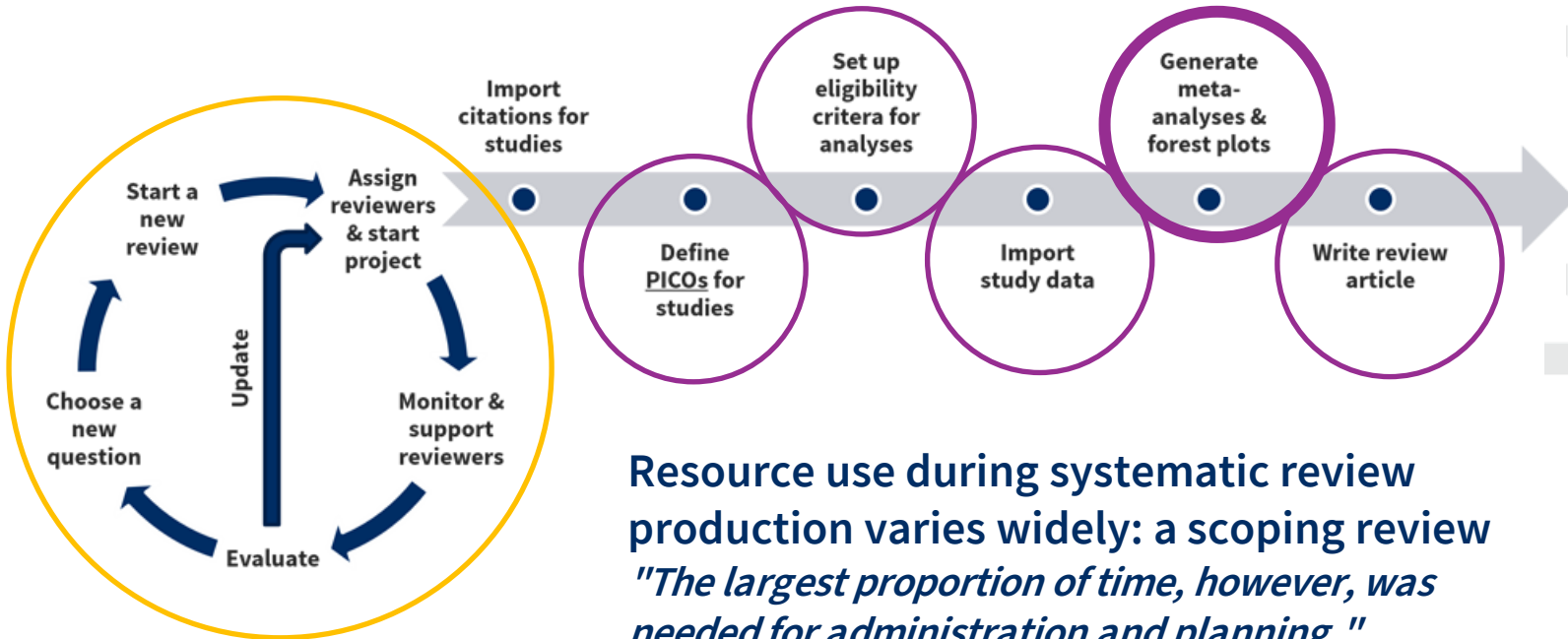
1. Is RevMan a good fit for you?
2. Get started using RevMan
3. Work on reviews in RevMan
4. Manage portfolios of systematic reviews in RevMan
5. Questions



# Is RevMan a good fit for you?



# What can RevMan do for you?



Resource use during systematic review production varies widely: a scoping review  
*"The largest proportion of time, however, was needed for administration and planning."*

# Get started using RevMan

- Register to use RevMan
- Create a review
- Add authors and author support roles

[revman.cochrane.org/info](http://revman.cochrane.org/info)



# Work on reviews in RevMan

- Set up meta-analyses in RevMan
- Import study data
- Write a review article with Cochrane's standard headings
- Export content from RevMan



# Manual analyses

Allow you to paste data directly into the data tab

For simple analyses with

- a. Smaller data sets
- b. Data already structured in expected format





# Automatic analyses

Enable you to:

- a. Import study data (including data from Covidence)
- b. Automatically combine arms
- c. Automatically combine arm data with between arm data (contrast data)
- d. Subgroup by structured characteristics (covariates)
- e. Re-use data for several analyses (e.g. for sensitivity analysis)



# Automatic analyses

For most analyses but especially valuable for

- a. Large data sets
- b. I want to use features described on previous slide
- c. A more structured process

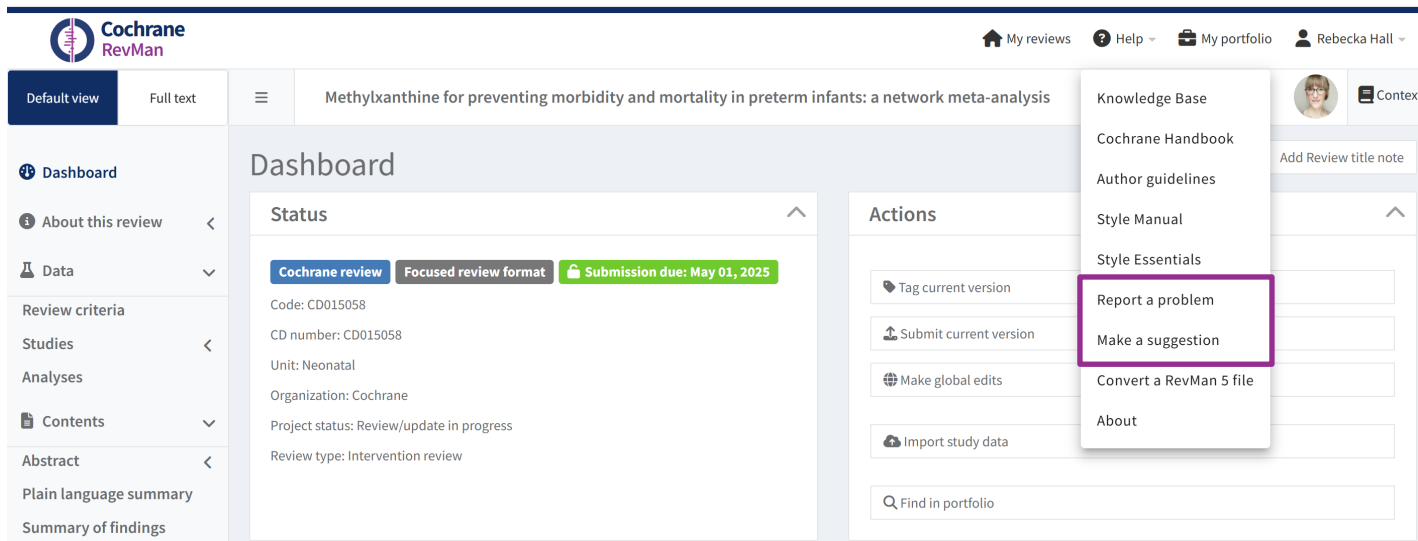


# Manage portfolios of systematic reviews in RevMan

- How to complete and assign milestones and tasks?
- How to set up project management features
- How to set up, assess and view lifecycle status for a review?



# Help us make RevMan better!



The screenshot shows the Cochrane RevMan interface. At the top, the Cochrane RevMan logo is on the left, and navigation links for 'My reviews', 'Help', 'My portfolio', and 'Rebecka Hall' are on the right. The main header displays the review title: 'Methylxanthine for preventing morbidity and mortality in preterm infants: a network meta-analysis'. A left sidebar contains a navigation menu with items like 'Dashboard', 'About this review', 'Data', 'Review criteria', 'Studies', 'Analyses', 'Contents', 'Abstract', 'Plain language summary', and 'Summary of findings'. The main content area is titled 'Dashboard' and includes a 'Status' section with tags for 'Cochrane review', 'Focused review format', and 'Submission due: May 01, 2025'. Below this, details for the review are listed, including the code (CD015058), CD number (CD015058), unit (Neonatal), organization (Cochrane), project status (Review/update in progress), and review type (Intervention review). To the right of the status section is an 'Actions' panel with buttons for 'Tag current version', 'Submit current version', 'Make global edits', and 'Import study data', along with a search bar for 'Find in portfolio'. A dropdown menu is open over the 'Style Essentials' section, listing options: 'Knowledge Base', 'Cochrane Handbook', 'Author guidelines', 'Style Manual', 'Style Essentials', 'Report a problem', 'Make a suggestion', 'Convert a RevMan 5 file', and 'About'. The 'Report a problem' and 'Make a suggestion' options are highlighted with a purple border.

**Cochrane RevMan** My reviews Help My portfolio Rebecka Hall

Default view Full text Methylxanthine for preventing morbidity and mortality in preterm infants: a network meta-analysis

### Dashboard

#### Status

**Cochrane review** **Focused review format** **Submission due: May 01, 2025**

Code: CD015058  
CD number: CD015058  
Unit: Neonatal  
Organization: Cochrane  
Project status: Review/update in progress  
Review type: Intervention review

#### Actions

- Tag current version
- Submit current version
- Make global edits
- Import study data

Find in portfolio

- Knowledge Base
- Cochrane Handbook
- Author guidelines
- Style Manual
- Style Essentials
- Report a problem**
- Make a suggestion**
- Convert a RevMan 5 file
- About

# Questions?





## Thanks for taking part

- **Contact us:**
  - Tweet us @cochranetrain, #cochranelearninglive
  - or send an e-mail to support@cochrane.org
- **Upcoming events:**
  - *training.cochrane.org/cochrane-learning-live*
- **Interested in joining Cochrane?**
  - *cochrane.org/join-cochrane*

