

ROB-MEN: Risk Of Bias due to Missing Evidence in Network meta-analysis

Virginia Chiocchia

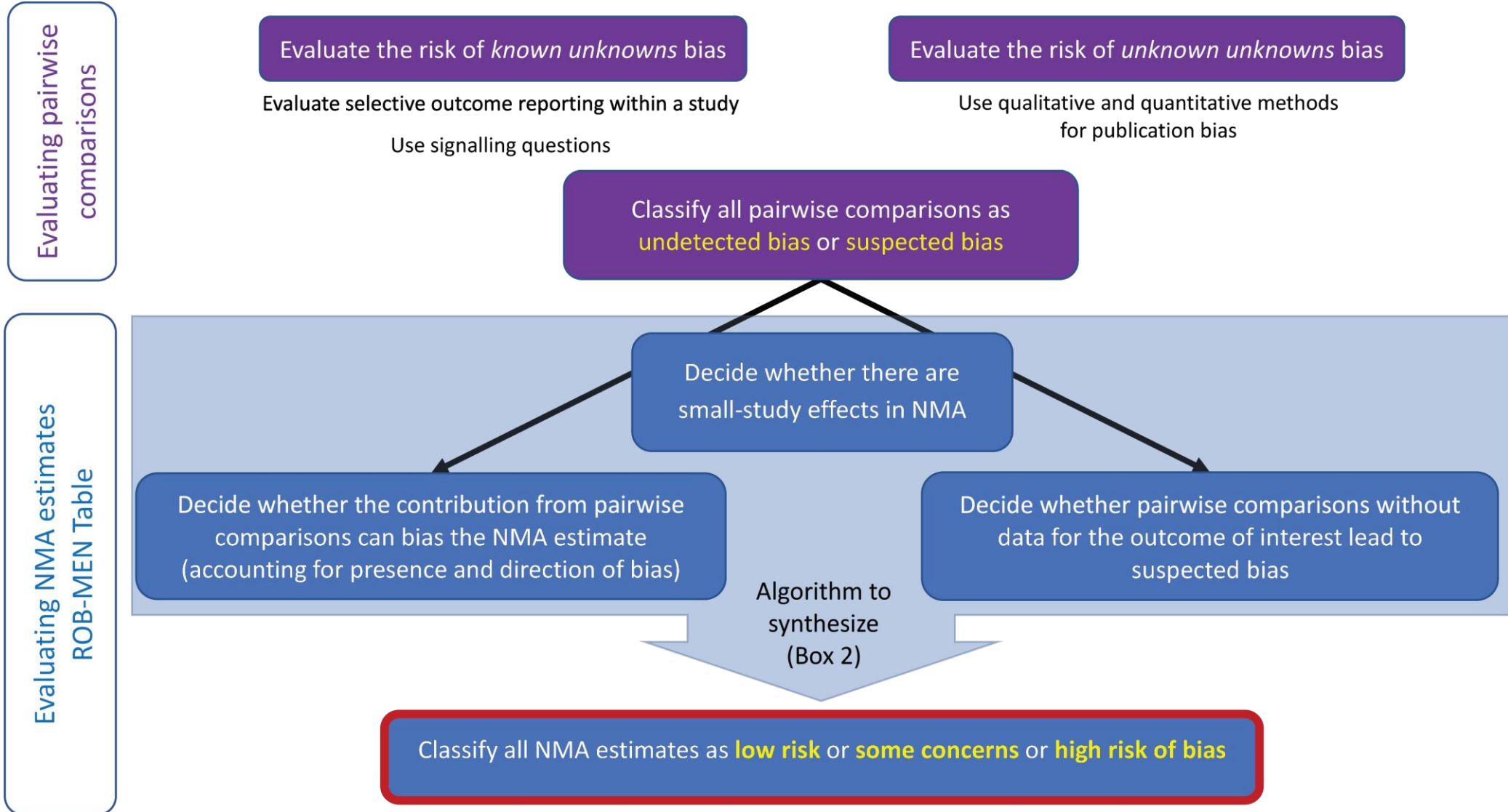
A day with...SMG

11th May 2021

Rationale

- Methods to assess publication bias and selective outcome reporting bias in pairwise meta-analysis
- Network meta-analysis (NMA) relative treatment effects estimated from direct + indirect evidence
- No rigorous framework to assess reporting bias in NMA

ROB-MEN



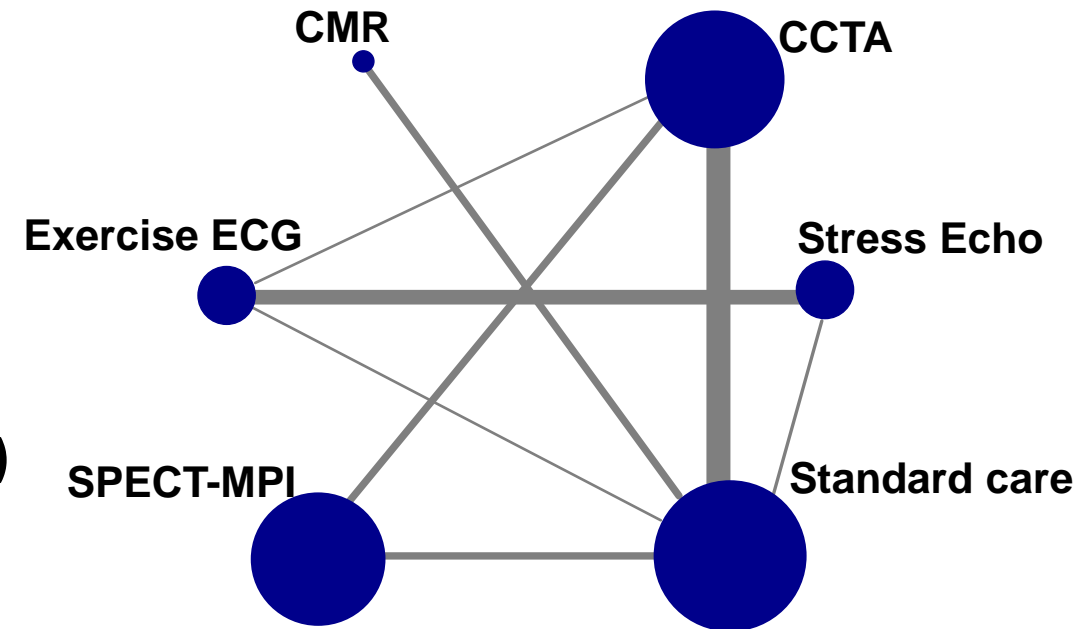
Shiny app

<https://cinema.ispm.unibe.ch/rob-men/>

Network of six non-invasive diagnostic modalities for detection of coronary artery disease in low risk acute coronary syndrome (ACS) patients (*Siontis et al, 2018*)

- Single photon emission computed tomography-myocardial perfusion imaging (SPECT-MPI)
- Exercise electrocardiogram (ECG)
- Cardiovascular magnetic resonance (CMR)
- Coronary computed tomographic angiography (CCTA)
- Stress echocardiography (Stress echo)
- Standard care

Outcome: referral to invasive coronary angiography (ICA)



Summary

- ROB-MEN first tool to evaluate bias due to missing evidence in NMA
- Part of CINeMA framework (<https://cinema.ispm.unibe.ch/>)
- Shiny app <https://cinema.ispm.unibe.ch/rob-men/>
- Elaboration and examples available as preprint www.medrxiv.org/content/10.1101/2021.05.02.21256160v1

